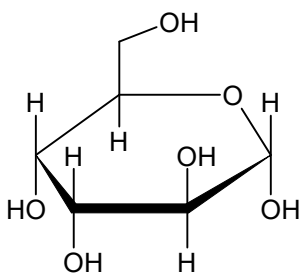
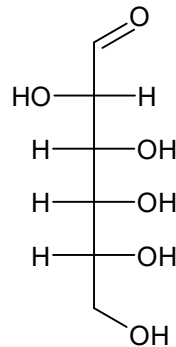
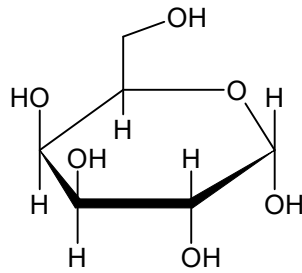


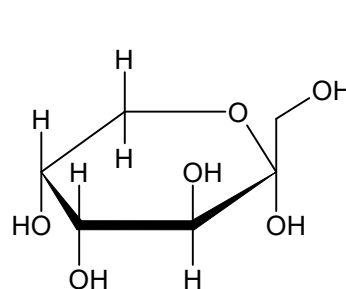
1. D-alkróza je jedným z monosacharidov zo skupiny aldohexóz. jej štruktúra (Fisherova projekcia) je znázornená na obrázku. Ako bude vyzerat' Haworthov projekcia jej alfa-anoméru ? α -D-altropyranosa



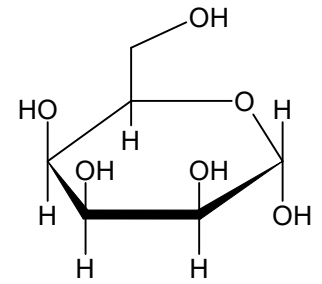
a.



b.

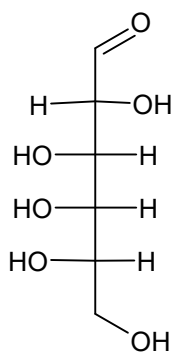
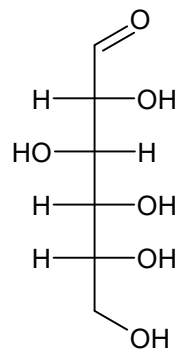


c.

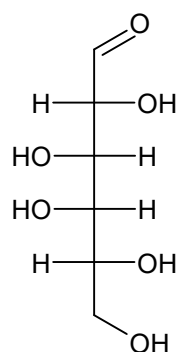


d.

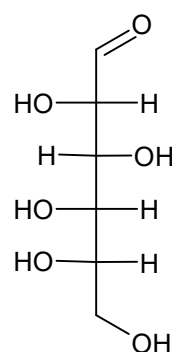
2. Na obrázku je znázornená štruktúra D-glukózy. Vyberte štruktúru L-glukózy



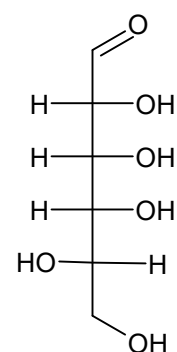
a.



b.



c.



d.